

VI—Libera me

Molto mod^{to} $\text{♩} = 60$

SOPRANO

ALTO

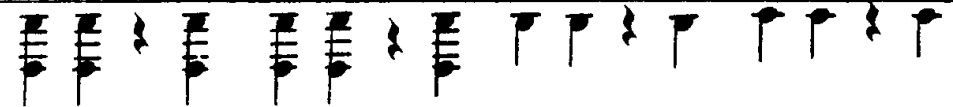
TENOR

BASS

BARITONE SOLO

Li - be - ra me,

PIANO

Molto mod^{to}

Do - mi - ne ————— De - mor - te - ter -

na In - di - e il - la - tre -

men - da in di - e il -

- la Quan - do cae - li mo - ven - di

poco a poco B

sunt quan - do cae - li mo - ven - di sunt et

crescendo

ter - ra Dum ve - ne - ris ju - di -

f *sempre f*

sempre f

Poco Rall.

ca - re sae - cu - lum per ig -

Poco Rall.

A tempo

- nem

A tempo

C SOPRANO
pp
Tra - mens tre - mens fac - tus sum e - - -

ALTO
pp
Tre - mens tre - mens fac - tus sum e - - -

TENOR
pp
Tre - mens fac - tus sum e - - -

BASS
pp
Tre - mens fac - tus sum e - - -

C
p

First system of a musical score. It consists of four vocal staves and a piano accompaniment. The vocal parts are in G major and 4/4 time. The lyrics are: - go Et ti - me - o et ti - me - . A dynamic marking 'D' is placed above the final measure of the vocal lines. The piano accompaniment provides harmonic support with chords and moving lines in both hands.

Piano accompaniment for the first system, showing the left and right hand parts. The music is in G major and 4/4 time, with chords and moving lines that support the vocal melody.

Second system of a musical score. It consists of four vocal staves and a piano accompaniment. The vocal parts are in G major and 4/4 time. The lyrics are: - o Dum dis - cus - si - o ve - ne - rit at - . Dynamic markings include *f* (forte) and *J* (marcato). A dynamic marking 'D' is placed above the final measure of the vocal lines. The piano accompaniment provides harmonic support with chords and moving lines in both hands.

Piano accompaniment for the second system, showing the left and right hand parts. The music is in G major and 4/4 time, with chords and moving lines that support the vocal melody.

- que ven - tu - ra i - ra
 - que ven - tu - ra i - ra
 - que ven - tu - ra i - ra
 - que ven tu - ra i - ra

p
p
p
p

0/4
 0/4
 0/4
 0/4

3

Più mosso (♩ = 72) *ff*

Di - es il - la
 Di - es il - la
 Di - es il - la
 Di - es il - la

ff
ff
ff
ff

Più mosso

ff sempre

Di - es i - rae Ca - la - mi -

Di - es i - rae Ca - la - mi -

Di - es i - rae Ca - la - mi -

Di - es i - rae Ca - la - mi -

ff

ff sempre

- ta - tis, Et mi se - ri - æ

- ta - tis, Et mi se - ri - æ

- ta - tis, Et mi se - ri - æ

- ta - tis, Et mi se - ri - æ

E *ff*

Di - - es il - - la Di - - es

Di - - es il - - la Di - - es

Di - - es il - - la Di - - es

Di - - es il - - la Di - - es

E *ff*

sempre

mag - na Et a - ma - ra a -

mag - na Et a - ma - ra a -

mag - na Et a - ma - ra a -

mag - na Et a - ma - ra a -

sempre

- ma - ra val - de Re - qui
 - ma - ra val - de Re - qui
 - ma - ra val - de Re - qui
 - ma - ra val - de Re - qui

dim. **F** *p*
dim. **p**
dim. **p**
dim. **p**

- em - æ - ter - nam
 - em - æ - ter - nam
 - em - æ - ter - nam
 - em - æ - ter - nam

F *p*

- em - æ - ter - nam
 - em - æ - ter - nam
 - em - æ - ter - nam
 - em - æ - ter - nam

cres - - - - *cen* - - - - *do*

Do - na e - is Do - mi - do

Do - na e - is Do - mi - do

Do - na e - is Do - mi - do

Do - na e - is Do - mi - do

cres - - - - *cen* - - - - *do*

f \rightrightarrows *p*

- ne Et lux per - I - tu -

- ne Et lux per - pe - tu -

ne Et lux per - pe - tu -

- ne Et lux per - pe - tu -

f \rightrightarrows *p*

sempre dolce

G

Three vocal staves (Soprano, Alto, Tenor) with lyrics: *sempre dolce* a lu - ce - at e -

Bass vocal staff with lyrics: a lu - ce - at e -

Piano accompaniment for the first system, including treble and bass clefs.

H Moderato (♩ = 60) *pp*

Vocal staves for Soprano, Alto, and Bass with lyrics: is Lu - ce - at e - *pp*

H Moderato

Piano accompaniment for the second system, including treble and bass clefs.

Musical score for a vocal and piano piece. The score is in G major and 4/4 time. It features a vocal line with lyrics "Li - be - ra - me Do - mi - ne" and a piano accompaniment. Dynamics include *mf*, *cresc.*, *p dolce*, *p*, and *dim.*

The score is divided into three systems. The first system shows the vocal line and piano accompaniment. The second system shows the vocal line and piano accompaniment. The third system shows the vocal line and piano accompaniment.

The lyrics are:

Li - be - ra - me Do - mi - ne

Li - be - ra - me Do - mi - ne

Li - be - ra - me Do - mi - ne

Li - be - ra - me Do - mi - ne

de mor - te æ - ter - - - na

de mor - te æ - ter - - - na

de mor - te æ - ter - - - na

de mor - te æ - ter - - - na

This system contains four vocal staves. Each staff has a treble clef and a key signature of one flat (B-flat). The lyrics are 'de mor - te æ - ter - - - na'. The notes are mostly quarter and half notes, with some slurs and ties. The bottom staff is a bass line with a bass clef.

This system shows the piano accompaniment for the first system. It consists of two staves: a right-hand treble staff and a left-hand bass staff. The music is in a B-flat major key signature and features chords and arpeggiated figures.

In - di - e il - la tre - men - da

In - di - e il - la tre - men - da

In - di - e il - la tre - men - da

In - di - e il - la tre - men - da

This system contains four vocal staves. Each staff has a treble clef and a key signature of one flat (B-flat). The lyrics are 'In - di - e il - la tre - men - da'. The notes are mostly quarter and half notes, with some slurs and ties. The bottom staff is a bass line with a bass clef.

This system shows the piano accompaniment for the second system. It consists of two staves: a right-hand treble staff and a left-hand bass staff. The music is in a B-flat major key signature and features chords and arpeggiated figures.

p *mf*

in di - e il - la

in di - e il - la

p *mf*

in di - e il - la

in di - e il - la

p *cresc.* **K**

Quan - do cae - li mo - ven - di sunt Quan - do

Quan - do cae - li mo - ven - di sunt Quan - do

Quan - do cae - li mo - ven - di sunt Quan - do

Quan - do cae - li mo - ven - di sunt Quan - do

Quan - do cae - li mo - ven - di sunt Quan - do

p *cresc.* **K**

f

cae - li mo - ven - di sunt et ter - ra

cae - li mo - ven - di sunt et ter - ra

cae - li mo - ven - di sunt et ter - ra

cae - li mo - ven - di sunt et ter - ra

f

ff

Dum ve - ne - ris ju - di - ca - ris

Dum ve - ne - ris ju - di - ca - ris

Dum ve - ne - ris ju - di - ca - ris

Dum ve - ne - ris ju - di - ca - ris

ff sempre

ff sempre

sempre L

re sae-cu-lum per ig-nem

re sae-cu-lum per ig-nem

re sae-cu-lum per ig-nem

re sae-cu-lum per ig-nem

L

sempre f

BARITONE SOLO

p dolce

Li-be-ra me Do-mine

p

Li - be - ra
Li - be - ra
Li - be - ra

pp
pp
pp

p De - mor - te æ - ter - na *pp* Li - be - ra

Basses Div.

Detailed description: This system contains four vocal staves. The top three staves are for soprano, alto, and tenor voices, each with the lyrics 'Li - be - ra'. The fourth staff is for the basso continuo, with lyrics 'De - mor - te æ - ter - na Li - be - ra'. Dynamics include *pp* for the vocal parts and *p* for the basso continuo. A 'Basses Div.' marking is present above the basso continuo staff.

Detailed description: This system shows the piano accompaniment for the first system, consisting of a grand staff with treble and bass clefs. The music features a steady accompaniment with some melodic lines in the right hand and a more active bass line.

me, Do - mi ne
me, Do - mi ne
me, Do - mi ne
me, Do - mi ne

Detailed description: This system contains four vocal staves, likely for soprano, alto, tenor, and bass. Each staff has the lyrics 'me, Do - mi ne'. The music is characterized by long, sustained notes, particularly in the 'Do' and 'ne' syllables, indicating a slow or solemn tempo.

pp

Detailed description: This system shows the piano accompaniment for the second system, consisting of a grand staff with treble and bass clefs. It begins with a *pp* dynamic marking. The accompaniment is sparse and features some chordal textures.